

# D RANGE

## DRY COOLERS BATTERIES

D range dry coolers are available in the following 3 versions:

- \*Compact dry coolers batteries (DC)  
Cooling power 20 to 40 kW
- \*Standard dry coolers batteries (DP)  
Cooling power 30 to 600 kW
- \*Customized industrial dry coolers batteries (D)  
Cooling power 140 to 1400 kW

### ELECTRICAL PANEL

Network voltage AC 400V – 3 Ph -50 Hz

Option AC 440V – 3 Ph – 60 Hz

Electronic regulator with digital display (option)

### HYDRAULIC CIRCUIT

Customized hydraulic connectors  
(1" for DC version)

Open stainless steel buffer tank (only for DC version)

Stainless steel pump (only for DC version)

### AEREAULICS CIRCUIT

Batteries equipped with copper tubes crimped on the aluminum fins

DC version: Axial fan with horizontal air flow

DP, D: Axial fan with vertical air flow

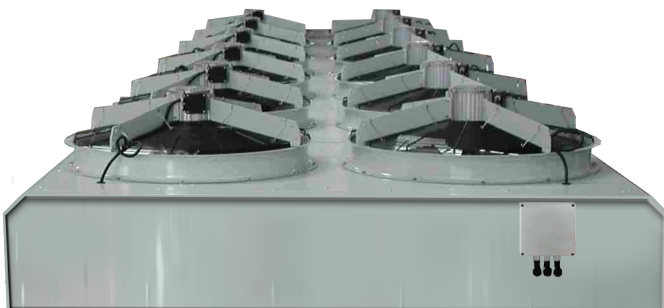
DC25-50



DP30-600



D140-1400



Industrial applications of dry coolers batteries:

These models can be used as stand-alone cooling systems for any industrial process requesting an output fluid temperature ranging from 28 to 48°C, and for an inlet air temperature ranging from 25 to 35°C

They can also be used as additional cooling capacity in "free cooling mode" for an output fluid temperature ranging from 8 to 28°C, and for an inlet air temperature ranging from 5 to 25°C