

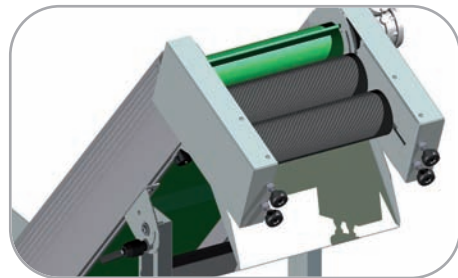
**DEGA S.p.A.**  
Largo del Lavoro, 4,6,8 - 25040  
Clusane sul lago (BS) ITALY  
info@dega-plastics.com

**Tradizionalmente all'avanguardia**

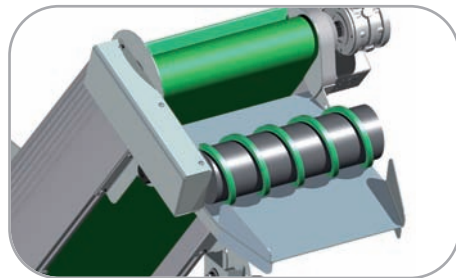


**NASTRI TRASPORTATORI**

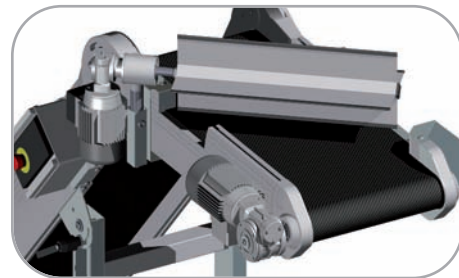




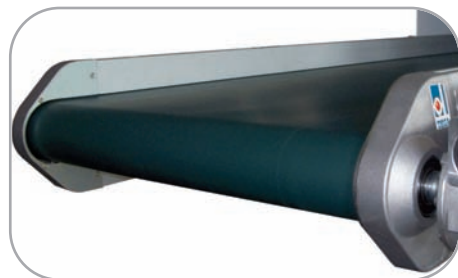
Separatore a rulli



Separatore a spirale



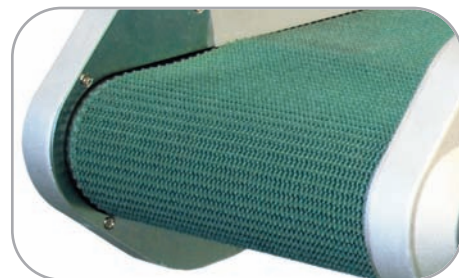
Separatore a palette



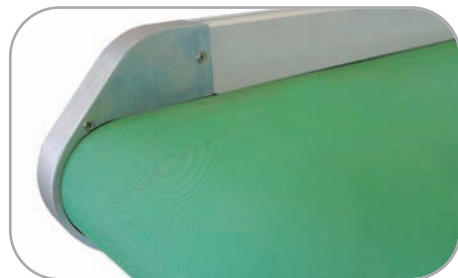
PU -20°/+120°



PU -20°/+120°



PVC -10°/+60°



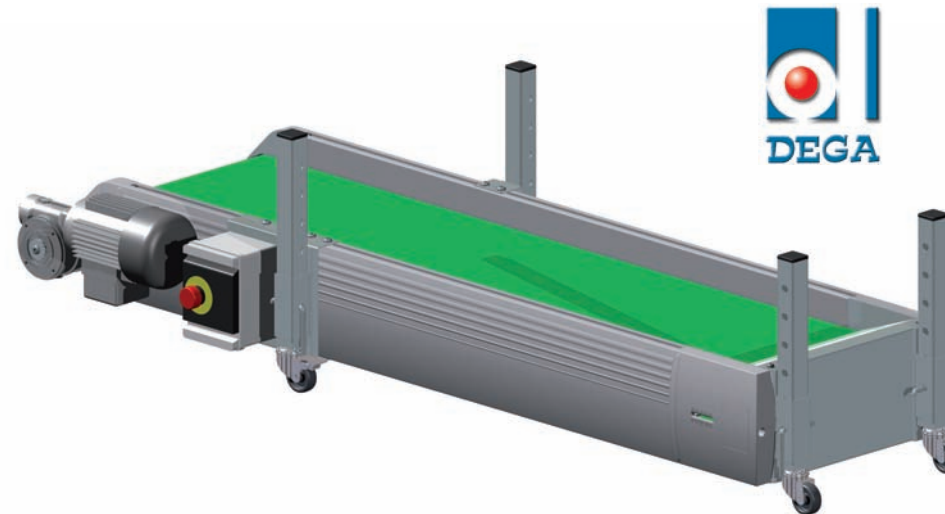
HT +180°



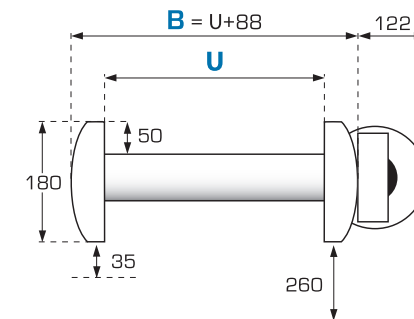
Spondaflex h. 30/50 mm. PU



PVC -10°/+60°



**NP**  
Nastro Piano  
Convoyeur Droit  
Flat Conveyor



### Nastro Piano

montato su ruote o piedini regolabili, è normalmente inserito nella pressa o nella soffiatrice.

Equipaggiato con tele: PU resistenti all'olio, lisce o supergrip, speciali ad alta temperatura per resistere al calore degli spurghi, per trasportare pezzi stampati in caucciù o termoindurente.

### Convoyeur Droit

monté sur roulettes ou pieds réglables, est normalement inséré dans la presse ou la soufflerie.

Equipé avec des Bandes: PU résistantes à l'huile Lisses ou à nid d'abeille spéciales à haute température pour résister à la chaleur des purges, pour transporter des pièces moulées en caoutchouc ou thermodurcissables.

### Flat Conveyor

mounted on castors or adjustable feet, is normally inserted inside the press or the blower.

It can be installed belts in oil-resistant PU, smooth or textured, or special high temperature to withstand the heat of purges, or to transport printed or rubber.

#### AL-NP-1

U: 246 B: 338 L: 1500

#### AL-NP-2

U: 346 B: 438 L: 1500

#### AL-NP-3

U: 446 B: 538 L: 1500

#### AL-NP-S (speciale)

Altre dimensioni su richiesta  
Andere Abmessungen auf Anfrage  
Other dimensions on request